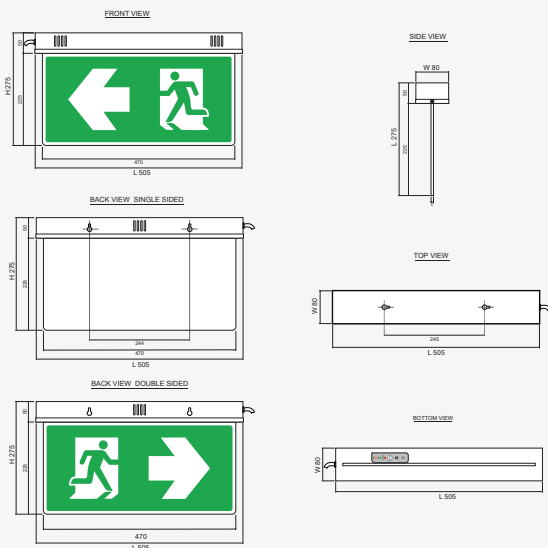




### Technical Specifications

Mode of Operation	Maintained
Input Voltage	220 VAC / 50Hz $\pm$ 10%
LED Lamp Power	12W
LED Color Temperature	6,500k - 7,000k
Battery Type / Capacity	Nickel Metal Hydride 2,100 mAh (1.2V x 3)
Charge Current (max)	0.210A
Charge Termination Voltage	1.4V/Cell
Charging Time	12 Hrs
Protections	- AC, DC Fuse - Battery Low Voltage Cut-Off
Testing System	Manual Testing
Backup Time	2.0 Hrs
Housing	Electro-galvanized steel sheet 1mm. thick with epoxy powder coating
Dimensions (LxWxH)	505 x 80 x 275 mm
Weight	2.30 Kg / Single sided 2.30 Kg / Double sided
IP Rating	20
Mounting	Surface Ceiling (Type C) / Wall (Type W)
Viewing Distance	36M (Pictogram Height 15 CM)

### Dimensions (mm)



### Product Overview

The SLS5-12LED (Single sided / Double sided) emergency exit sign can be ceiling mounted and surface mounted.

The LEDs used for illumination are SMD low Power High Lumen type.

It uses SMT technology that consumes 6 times less electricity than those using fluorescent bulbs with 7 times longer operational life, the quality and brightness of illumination is also certified by the Thai industrial Standard 2430-2552 and Thailand Engineering Standard 021004-18

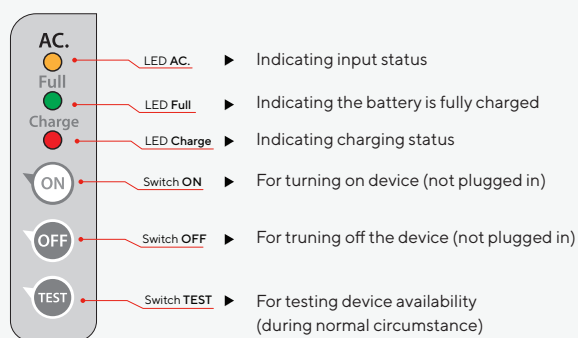
The unit uses Ni-MH (Nickel Metal Hydride) batteries that are smaller but more efficient. The sign is made with white semi-translucent acrylic that evenly diffuse the light throughout the whole sign, even after an extended period of use.

The chassis is made with 1mm. thick Electro-Galvanized steel sheets coated with Epoxy powder and stove enameled to help protect from any possible rust.

### Features

- Uses high power LEDs rated at 12 Watts for illumination
- Having LED lifetime of over 50,000 hours
- Operate for 2.0 hours on backup time
- Automatically recharged with constant voltage and limited current
- Battery overcharge protection circuit prevents overcharge which is the cause of battery swelling
- Battery discharge protection circuit prolongs the battery life
- Pictorial element height 15 cm

### Indicators



### Installation

