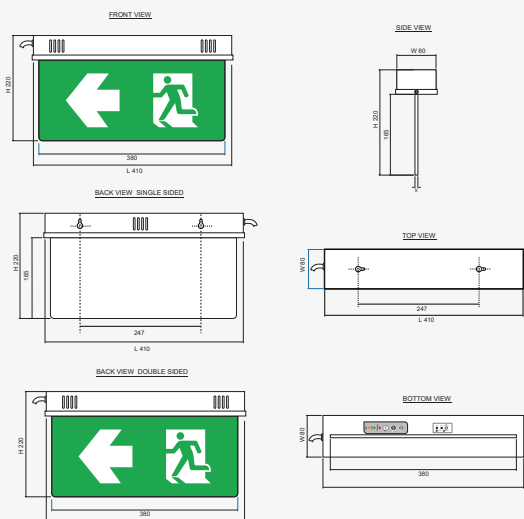




### Technical Specifications

Mode of Operation	Maintained
Input Voltage	220 VAC / 50Hz $\pm$ 10%
LED Lamp Power	10W
LED Color Temperature	6,500k - 7,000k
Battery Type / Capacity	Nickel Metal Hydride 1,800 mAh (1.2V x 3)
Charge Current (max)	0.180A
Charge Termination Voltage	1.4V/Cell
Charging Time	12 Hrs
Protections	- AC, DC Fuse - Battery Low Voltage Cut-Off
Testing System	- Automatic Testing - Manual Testing or Remote Testing
Backup Time	2.0 Hrs
Housing	Electro-galvanized steel sheet 1mm. thick with epoxy powder coating
Dimensions (LxWxH)	410 x 80 x 220 mm
Weight	1.70 Kg / Single sided 1.70 Kg / Double sided
IP Rating	20
Mounting	Surface Ceiling (Type C) / Wall (Type W)
Viewing Distance	24 M (Pictogram Height 10 CM)

### Dimensions (mm)



### Product Overview

The SLS4-10LED (Single sided / Double sided) emergency exit sign can be surface wall mounted and ceiling mounted.

The LEDs used for illumination are SMD low Power High Lumen type. It uses SMT technology that consumes 6 times less electricity than those using fluorescent bulbs with 7 times longer operational life, the quality and brightness of illumination is also certified by the Thai industrial Standard 2430-2552 and Thailand Engineering Standard 021004-18.

The device is controlled by the microcontroller. Thus, it can be activated by either pressing the Function Test button on the device or by remote testing.

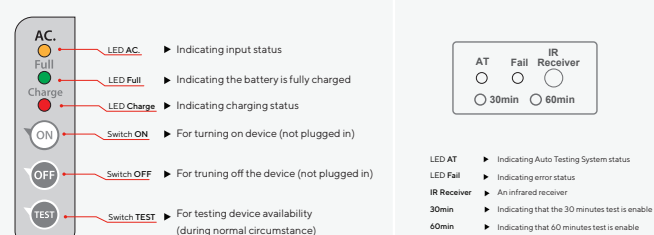
The sign is made with white semi-translucent acrylic that evenly diffuses the light throughout the whole sign, even after an extended period of use.

The chassis is made with 1mm. thick Electro-Galvanized steel sheets coated with Epoxy powder and stove enameled to help protect from any possible rust.

### Features

- Uses high power LEDs rated at 10 Watts for illumination
- Having LED lifetime of over 50,000 hours
- Operate for 2.0 hours on backup time
- Automatically recharged with constant voltage and limited current
- Battery overcharge protection circuit prevents overcharge which is the cause of battery swelling
- Battery discharge protection circuit prolongs the battery life
- Allowing testing with a remote control
- Equipped with the Auto test Function operating for 30 minutes every 30 day

### Indicators



### Installation

